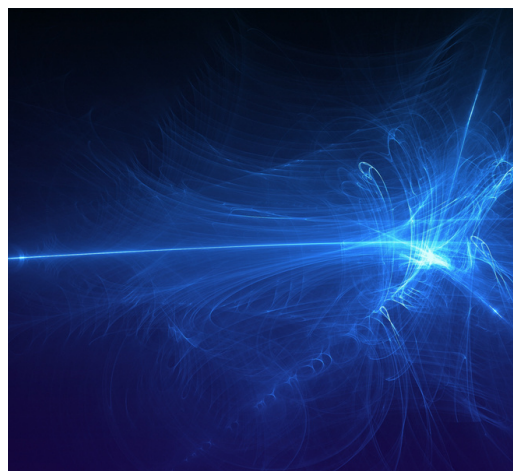


WHO ARE WE?

OBSERVATORY ON
DIGITAL
COMMUNICATION



The Observatory was founded in **1996** by **UNESCO** with the mission of **fighting poverty** through **digital innovations**. Since 2003, OCCAM has been associated with **UNDGC**, while in 2005 it received **Special Consultative Status** at ECOSOC.



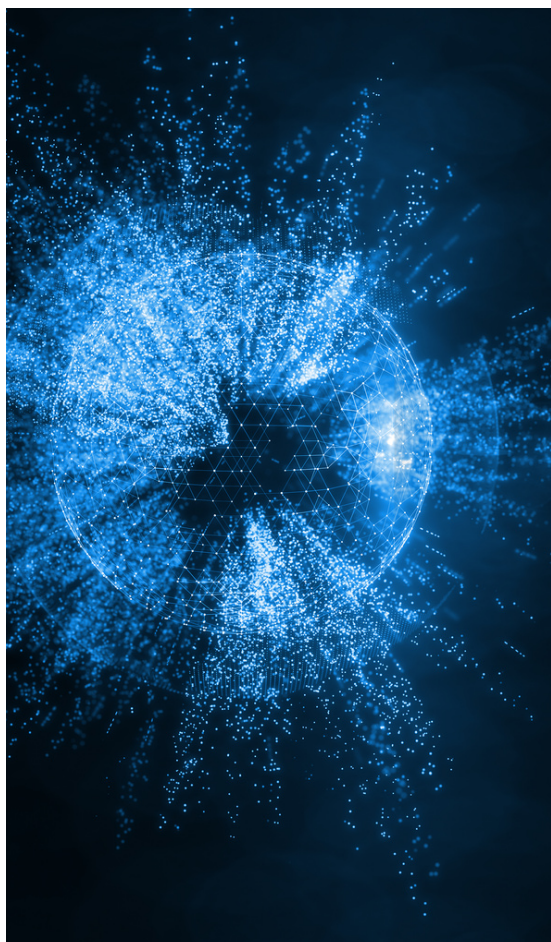
WHAT ARE WE DOING?



Since its foundation, **OCCAM** has been led by the core principle of becoming a **pilot explorer** actively involved in the **Digital Revolution**, while applying innovations through **best practices** for helping **disadvantaged communities**.

**21 YEARS OF
CONFERENCE**

THE INFOPOVERTY WORLD CONFERENCE



OCCAM interprets and forecasts new trends, leading the various **turning-point momenta** to share the results achieved at the annual **Infopoverty World Conference**.

21 YEARS OF CONFERENCE

The First Infopoverty World Conference was organized by OCCAM in **June 2001**. The Conference represents, for its continuity, operational capability and strong interoperability with the UN System, a **unique global forum**, gathering **leading experts, academics, opinion leaders, managers, government officials and philanthropists**.

THE INFOPOVERTY PROGRAMME

To realize the suggestions emerging from the discussion, the Infopoverty Programme was established to concretely help the poorest and most disadvantaged populations in the developing world through the use of ICTs.



The Infopoverty Programme puts into practice the guidelines issued by the Conference through the creation of the **ICT Village Model**.

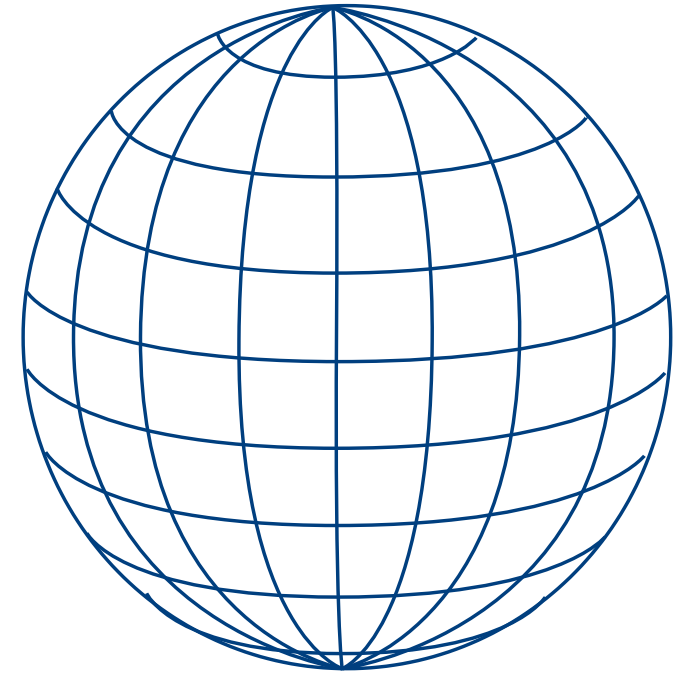
The image is a vertical composition featuring a central white circle. The background is a solid dark blue. Four large, expressive brushstrokes in various shades of blue (from light cyan to deep navy) are positioned around the central circle. One stroke is on the left, one on the right, one at the top, and one at the bottom, all appearing to frame the central area. The word "VILLAGE" is written in a bold, dark blue, sans-serif font, centered within the white circle.

VILLAGE

ICT VILLAGE

The ICT Village Model follows a process of intervention flexible and easily replicable in many areas of the globe, providing various services designed to promote endogenous and sustainable development process.

**A PROCESS OF FLEXIBLE
INTERVENTION, EASILY
REPLICABLE IN MANY
AREAS OF THE GLOBE**



The first ICT village project was carried out in 1999 in Honduras hit by the devastating hurricane Mitch. Thanks to the use of solar panels, the supply of electricity was guaranteed. This enabled the creation of the first e-learning and telemedicine services.

WORLD FOOD SECURITY E-CENTER

**FROM THE
EXCELLENT
NETWORK OF
ITALIAN
UNIVERSITIES AND
LABORATORIES
DIRECTLY TO
POPULATIONS AND
COMMUNITIES IN
NEED THROUGH A
HIGH CONNECTIVITY
DIGITAL PLATFORM.**

The World Food Security e-Center (WFSeC) aims to provide digital services to support agricultural development and food security, transferring technologies and knowledge. The project was presented on the occasion of EXPO Milano 2015 and took its legacy in the following years to put into concrete action its core principles



E-MED MED

E-MedMed is a project born in the context of the Union for the Mediterranean. It aims to bring an innovative and efficient diffusion of health services in Tunisia, Morocco, Libya, and Egypt through telemedicine.

**E-HEALTH
AND
MEDICAL
SERVICES**



It is the result of the experimentation of over 15 years of applications in various ICT Villages in the field of maternal care, emergencies, cardiology, and traumatology.

A photograph of three women walking along a dirt path in a rural area. The woman on the left is wearing a blue patterned dress and a blue face mask. The woman in the middle is wearing a blue patterned dress and a blue face mask. The woman on the right is wearing a green patterned dress and a blue face mask. They are walking towards the right. In the background, there are trees and a clear blue sky.

HORIZON
2020
EUROPEAN
PROJECT

A photograph of a large, deep, eroded gully in a dry, hilly landscape. The gully is filled with dry, yellowish-brown soil and has a steep, eroded wall. The background shows more hills and a clear blue sky.

**EWA-
BELT
PROJECT**

A photograph of a person working in a field of young green plants. The person is wearing a red shirt and dark pants, and is using a long-handled tool to work the soil. The field is filled with rows of young green plants, and there are trees in the background.

LINKING
EAST and
WEST
AFRICA
TOGETHER

EWA-BELT PROJECT EU HORIZON 2020

**INTEGRATED
PARTICIPATIVE
RESEARCH,
INNOVATIVE TOOLS
ALL COUNTRIES
WILL BE LINKED INTO
AN
INTERREGIONAL
EAST-WEST AFRICAN
BELT.**

The most relevant and effective implementation of the WFSec is EWA-BELT, an EU Horizon2020 project (GA 862848) aimed at developing the sustainable intensification of agriculture productions in organic, agroforestry and mixed crop and livestock farming systems in 38 study areas of 6 countries belonging to East (Ethiopia, Kenya, Tanzania) and West (Burkina Faso, Ghana, Sierra Leone) Africa.

